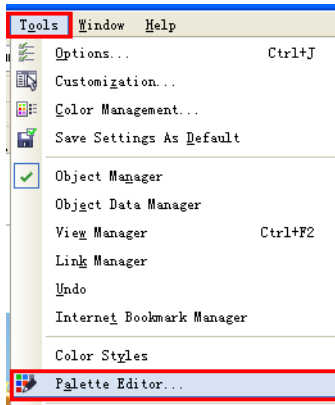




# PhotoPRINT: Made the spot white in Coreldraw

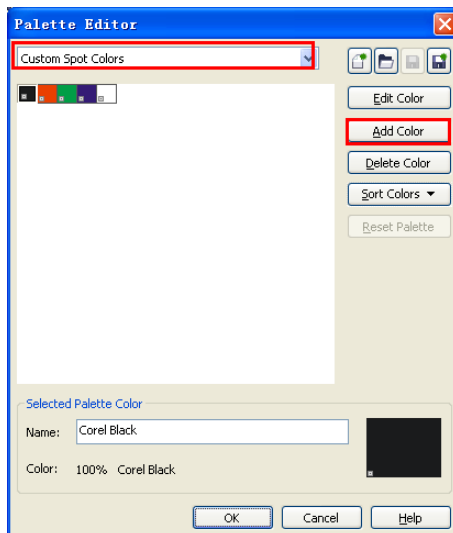
1 Open the Palette Editor.



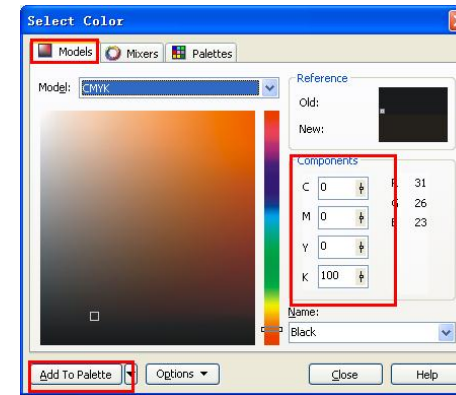
Tips: Tools-Palette Editor.

2 Add spot white color.

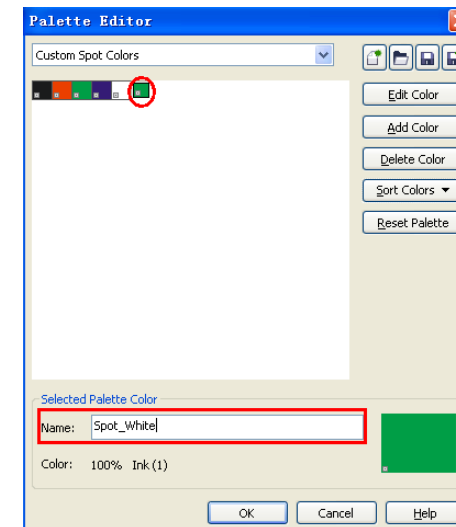
Choose the custom spot colors and click add color.



Choose the models and add to palette.



Set the name is Spot\_White and click ok.



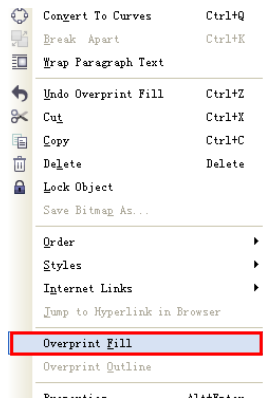
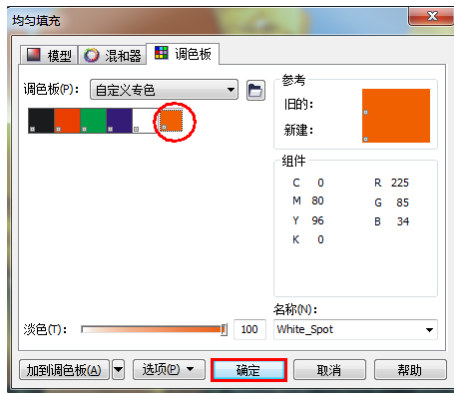
3 Create some texts or objects that you want to

fill with the spot white.

# PhotoPRINT: Made the spot white in Coreldraw

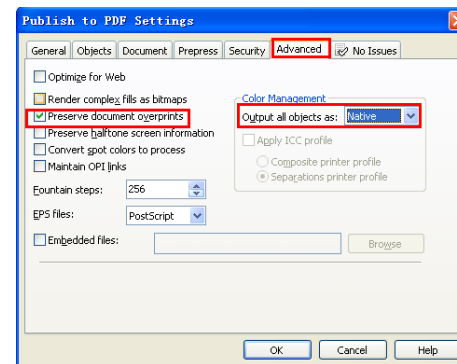
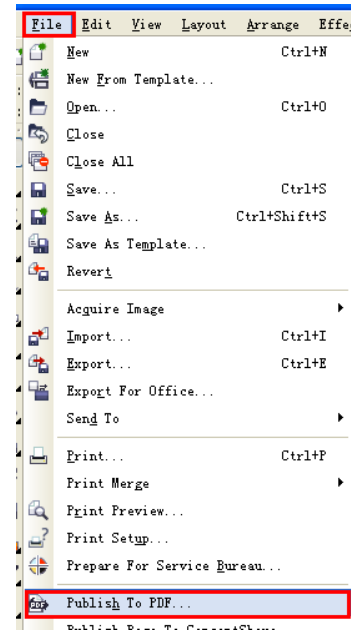


## 4 Fill Objects with Spot White Swatch and overprint.



Tips: Select the object and right mouse click.

## 6 Publish to PDF

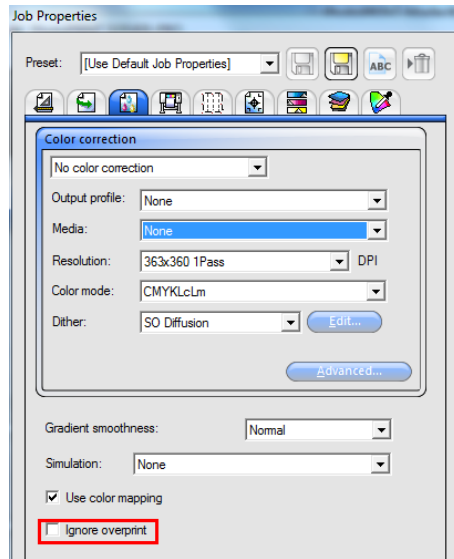


- Tips:
1. Checked the preserve document overprints.
  2. Set output all objects as native.

## 5 Add the pdf file to PhotoPRINT.

# PhotoPRINT: Made the spot white in Coreldraw

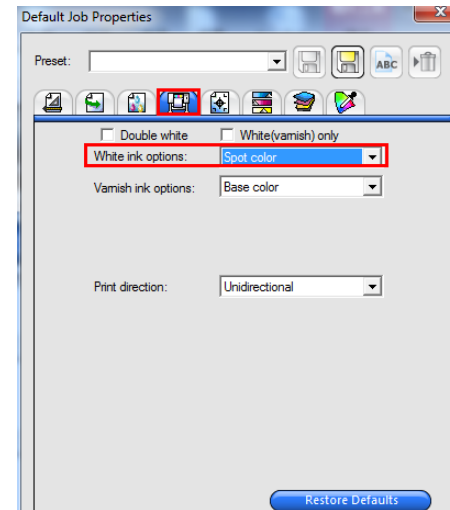
## 6 Set "Job properties-Color Management"



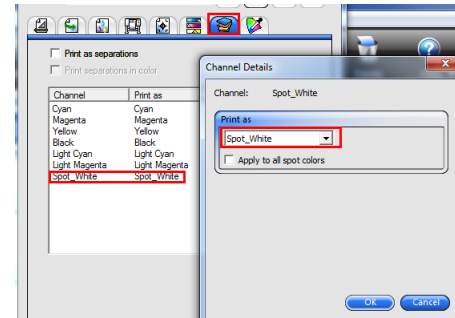
Tips: Let the ignore overprint unchecked.

## 7 Set "Job properties-Printer options"

Set the White options as spot white.



## 8 Set "Job properties-Separations"



Set the spot channel print as spot white.

Tip: Double click the channel can appear the dialog.